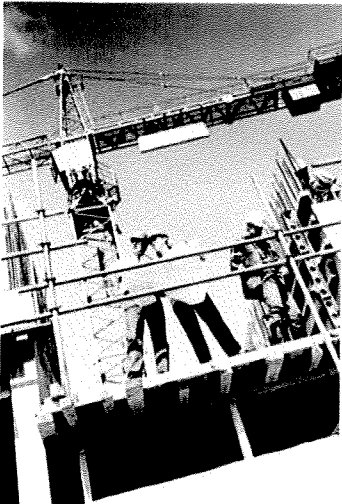




Benchmark Construction Pay Levels With FMI's New Product – Compensation Interactive



Phoenix
5080 North 40th Street
Suite 245
Phoenix, AZ 85018
Tel: 602.381.8108
Fax: 602.381.8228

Other FMI Corporation
Locations

Raleigh - Headquarters
5171 Glenwood Avenue
Suite 200
Raleigh, NC 27622
Tel: 919.787.8400
Fax: 919.785.9320

Denver
55 Madison Street
Suite 410
Denver, CO 80206
Tel: 303.377.4740
Fax: 303.377.3535

Tampa
308 South Boulevard
Tampa, FL 33606
Tel: 813.636.1364
Fax: 813.636.9601

www.fminet.com

©FMI Corporation

Getting accurate, up-to-date compensation information has never been more important. FMI's new product for the construction industry, Compensation Interactive, offers the following benefits for contractors:

- Construction specific benchmarking – View salary and bonus statistical data from more than 50 staff-level construction positions
- Customized reporting – Customize your report and sort the data by contractor type, revenue and region/state/metro areas
- Real-time data – Access real time, continuously updated data 24 / 7 from your online account
- Low price – Generate, print, PDF or download an unlimited number of reports for the low annual membership price of \$500/year

Introductory offer for AGC members – AGC members who sign up before June 30, 2010 receive a free six-month trial membership. Just enter coupon code AGCFMI2010 when signing up.

Available Reports

Report: Compensation Interactive

Options

Position:

Contractor Type:

Revenue:

Region/State/Metro:

	Number of Incumbents	Base Salary	Bonus	Total Cash
Average	384	\$106,822	\$9,947	\$116,769
10th Percentile		\$93,311	\$3,547	\$96,858
25th Percentile		\$95,721	\$9,440	\$105,161
50th Percentile		\$106,459	\$7,621	\$114,079
75th Percentile		\$114,339	\$12,806	\$127,145
90th Percentile		\$123,431	\$16,507	\$139,938

Position Description for this Position:

Responsible for the overall direction, completion and financial outcome of a single construction project or multiple projects. Directs and supervises work of Project Administration, Project Superintendents and Engineers to establish operational priorities and maintain satisfactory relationships with owners, subcontractors, unions, etc. This level is capable of managing more complex small to medium size projects with a minimum of 5 to 10 years of experience. Typical position titles include Project Manager and Project Manager II.

Created 03-04-2010 by Sean Taylor

For more details, please go to CompensationInteractive.com. Sign up and start generating reports today!